



*DEST*  
**CONSUMER PRODUCTS**  
**AMCA**  
**INTERNATIONAL**

**PFA-2**

Issued: September, 1983  
 Revised: August, 1984

**PORTABLE FORCED AIR  
 HEATERS**

*Illustrated Parts List*

**REDDY  
 HEATER  
 R70**

**IMPORTANT** DO NOT USE KEY NUMBERS WHEN ORDERING SERVICE PARTS. ALWAYS ORDER COMPONENTS BY PART NUMBER AND DESCRIPTION. INCLUDE MODEL AND SERIAL NUMBERS

KEY NO.	PART NO.	PART DESCRIPTION	QTY.
1	M51104-01	Handle	1
2	<del>M50901-01AC</del>	Shell, Upper <i>098511-36</i>	1
3	<del>M50589-01</del>	Screw, Handle <i>M11084-29</i>	2
4	M11084-27	Screw, #10-16X½	6
5	<del>M50785-05</del>	Combustion Chamber <i>098512-12</i>	1
6	M10908-2	Screw, #6-32X3/8	2
7	M16660	Bracket, Photo Cell	1
8	<del>M16656-4</del>	Photo Cell <i>HA3019</i>	1
9		Burner Head Assembly (See #9 on back)	1
9-1	<del>M50880-01</del>	Nozzle <i>HA3008 (incl sleeve)</i>	1
9-2	M10659-1	Washer, Nozzle	2
9-3	M10809-1	Spring, Nozzle	1
9-4	M8882	Seal, Nozzle	1
9-5	M16741-18	Ring, Retainer	1
9-6	<del>M25020</del>	Body, Burner Head <i>M51098-02</i>	1
9-7	M50820-01	Fitting, Barb	2
9-8	M16535	Adapter, Nozzle	1
9-9	<del>M10962-2</del>	Spark Plug <i>HA3012</i>	1
10	M11084-27	Screw, #10-16X½	3
11	M51107-01	Fan 7" dia. X 1¼ Pitch	1
12	<del>076892-03</del>	Motor and Pump Assembly (See #12 on back)	1
12-1	<i>097308 02</i>	Motor	1
12-2	<i>079975 02</i>	Body, Pump	1
12-3	M22009	Insert, Rotor	1
12-4	M22456-1	Rotor	1
12-5	M29608	Cover, End Pump	1
12-6	M29632	Filter, Lint	1
12-7	M29633	Filter, Intake	1
12-8	M29609	Filter, End Cover	1
12-9	M12461-31	Screw, #10-32X1	3
12-10	M27694	Screw, Adjusting	1
12-11	M10993-1	Spring-Relief	1
12-12	M22997	Plug	1
12-13	M8940	Ball, Steel ¼ Dia.	1
12-14	M29612-01	Filter, Output	1
12-15	M12461-31	Screw, #10-32X1	6
12-16	M50016	Elbow, 90° Barb Fitting	1
12-17	M8643	Blade	4
12-18	FHPF3-4C	Screw, #10-32X½	2

KEY NO.	PART NO.	PART DESCRIPTION	QTY.
13	M51105-01	Guard, Fan	1
14	<del>M9900-157</del>	Wire, Red <i>M16841-16</i>	1
15	<del>M25061-1</del>	Relay <i>098165-01</i>	1
16	<del>NJC-4C</del>	Nut-Jam <i>NJC-4C</i>	2
17	<del>M50633-0K</del>	Bumper, Rubber	2
18	RC2-2C	Screw, #8-32X¼	1
19	<del>M51001-04</del>	Bracket, Motor <i>098138-01</i>	1
20	M30865-02	Bushing	1
21	M25907	Bushing	1
22	M11271-6	Nut-Tinnerman	6
23	M50104-02	Bushing	1
24	M11084-26	Screw, #10-12X3/8	6
25	M15823-37	Screw, #8X¼	1
26	<del>M50902-01AC</del>	Shell, Lower <i>098511-18</i>	1
27	M29652-05	Airline Rubber	1
28	<i>098557-02</i>	Transformer, 5000 Volt	1
29	M11084-26	Screw, #10-12X3/8	2
30	M29652-04	Fuel Line	1
31	M50876-05	Filter, Fuel	1
32	M9900-162	Wire, White	1
33	M13942-6	Wire, Nut (Large)	1
34	M13942-5	Wire, Nut (Medium)	1
35	M13942-7	Wire, Nut (Small)	1
36	<del>M50671-04</del>	Control, Flame Out <i>HA3003</i>	1
37	M51027-06	Cap, Fuel (Includes gasket)	1
38	M10813-81	Cord, Power	1
39	M11143-1	Bushing Strain Relief	1
40	M11084-26	Screw, #10-12X3/8	2
41	M50899-03AA	Cover, Side	1
42	<del>M50811-06AA</del>	Tank, Fuel <i>098513-24</i>	1

PARTS AVAILABLE - NOT SHOWN

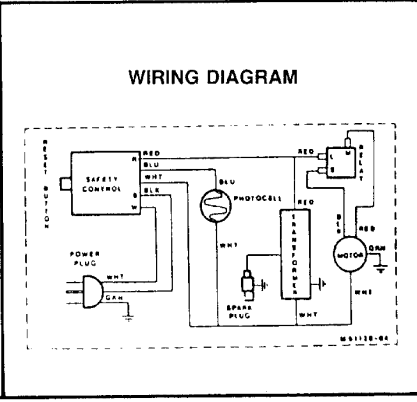
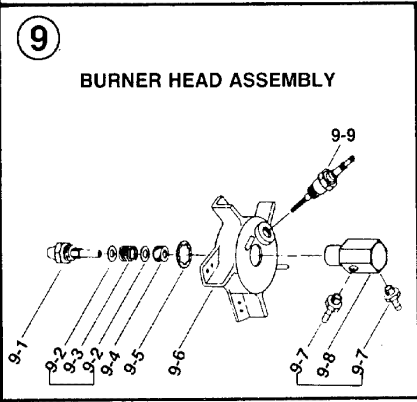
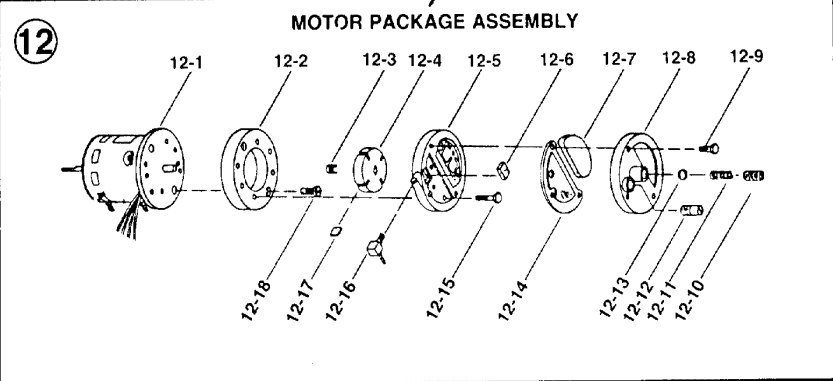
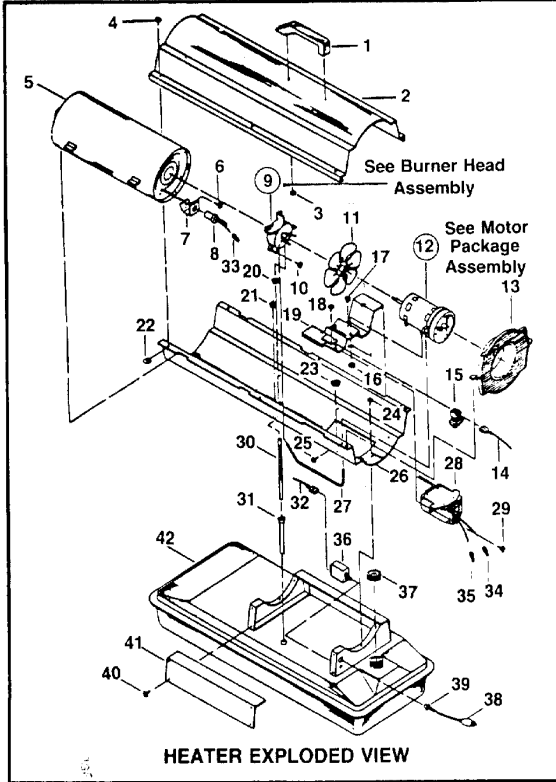
M51109-03	Decal, Nameplate	
M51110-01	Decal, Warning	
M51111-01	Decal, Tradename	

OPTIONAL ACCESSORIES

<del>HA12001A10</del>	Hang-Up Thermostat	
HA1206	Wheel Kit	
<i>HA1202</i>	<i>Body Wheel &amp; Handle Kit</i>	

Rev. A  
 dat

# REDDY R70



## SPECIFICATIONS

	R-70		R-70
OUTPUT Rating (BTU Per Hour)	70,000	Motor RPM	3340
Fuel	kerosene, # fuel oil	Air Output (CFM)	174
Fuel Tank Capacity, U.S. Gallons	5.00	Air Pump Pressure	4.00
Fuel Consumption, Approx. U.S. Gal. Per Hour	0.52	Shipping Weight (Approx. Lbs.)	44
Electric Requirements	120 60Hz	Without Fuel	37
Amperage (During Normal Run)	3.00	Duct	No Duct Recommended
Starting Amps	8.00		