

Spec. No. 2982G1-2 and 3072G01

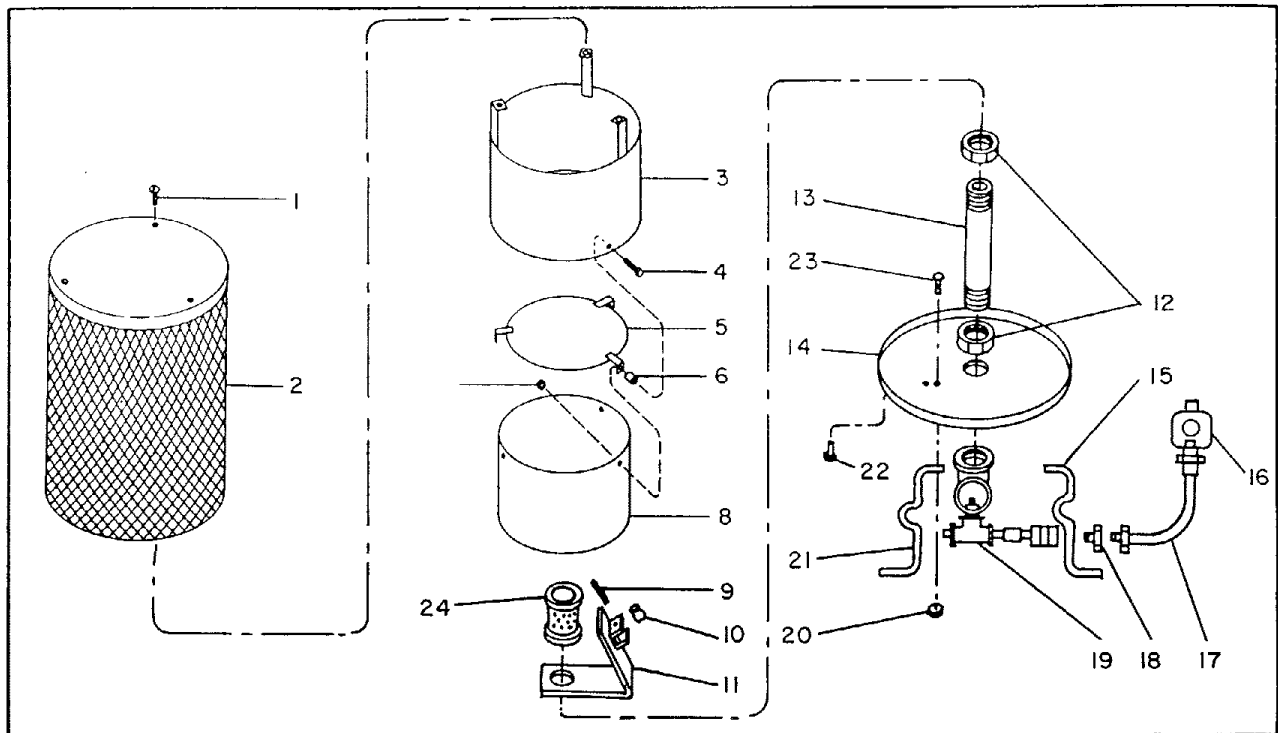


Figure 5. Exploded View of Model SAL-90A

Index No.	Part Number	Part Name	Qty
5-1	RC3-4	*Screw, Round Hd, No. 10-24 x 1/2	3
2	M18831-1A	Outer Wrapper	1
3	M18834-1A	Upper Chamber	1
4	M12461-55	Screw, Hex Hd.	3
5	M18838-1	Flame, Spreader	1
6	851472	Spacer	3
7	NTC-3	Nut, Torque Lock No. 10-24	3
8	M18837A	Lower Chamber	1
9	M20360	Thermocouple	1
10	M20361	Clip Retaining	2
11	M20798-1A	Bracket Assy, Thermocouple	1
12	M20352	Locknut	2
13	M18787A	Nipple, Pipe	1
14	M20792A	Base	1
15	M20793A	Leg	1
16	M17507-1	Regulator Assy	1
17	M19837-1	Hose Assy, Gas Line, 10 Foot	1
18	M20747	Adaptor, Hex (Part of Valve and Nozzle Assy)	1
19	M20794-1	Valve and Nozzle Assy (See Figure 4)	1
20	NTC-3C	Nut, Torque Lock, No. 10-24	6
21	M18825A	Leg	2
22	M12461-27	*Screw, Hex Hd.	3
23	M12461-52	*Screw, Hex Hd.	6
24	M20800A	Coupling, Air Mixture	1
	M18196	Decal, Nameplate	1
	M18814	Decal, Caution	1

*Standard hardware obtainable locally.

SECTION VI
 ILLUSTRATED PARTS LIST

This section contains a list of all replaceable parts used in the heater covered by this manual. Standard hardware items are indicated by the symbol (*).

Check the model decal for correct model number

of the heater. Include the model, specification, and serial numbers when ordering parts. Order parts by part name and part number only. Do not use index numbers from the illustration when ordering parts. Specify color when ordering painted parts.

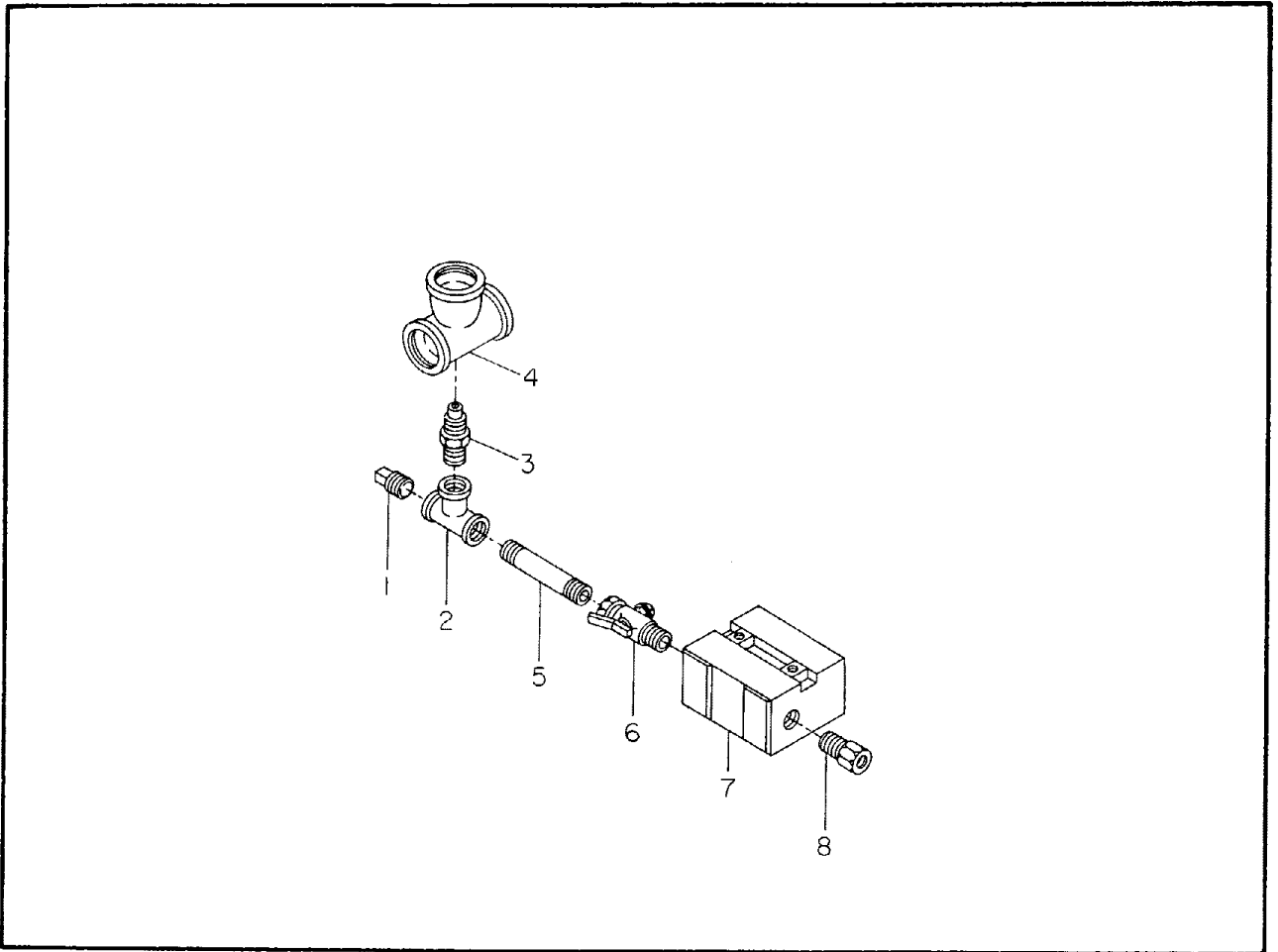


Figure 4. Valve and Nozzle Assembly

Index No.	Part No.	Part Name	Qty
4-1	M13990	*Plug, Pipe, 1/4 in. square head	1
2	M19294	Tee	1
3	M20797	Nozzle	1
4	M20795	Tee, Nozzle, Adaptor	1
5	M17499-4	Nipple, Pipe	1
6	M19212	Valve, Shutoff	1
7	M18794	Valve Control	1
8	M20747	Adaptor, Hex (See figure 5)	REF

*Standard hardware obtainable locally.