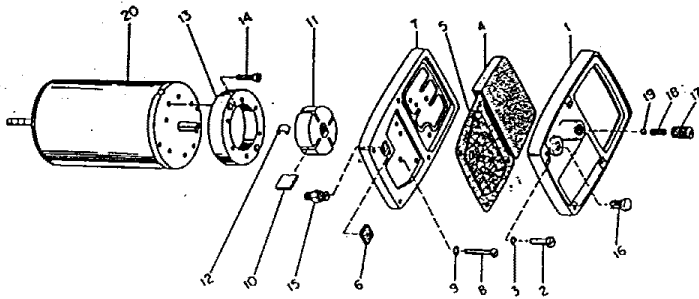
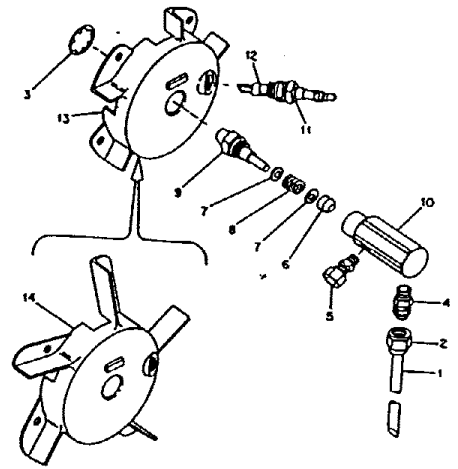


Master B99E spec# 2965G9

B140E spec# 2964G18  
2968G18



			B-99E	B-140E
1	M16545	End Cover, Filter	1	1
2	M12461-31	Screw (Filter End Cover to Pump End Cover)	4	4
3	WLI-3	Lockwasher, Internal, No. 10	4	4
4	M12179	Intake Air Filter	@	1 1
5	M12244G1	Output Filter Assy	@	1 1
6	M11637	Filter, Lin	@	1 1
7	M12233	End Cover, Pump (Port Plate)	1	1
8	M12461-32	Screw (End Cover to Motor)	6	-
	M12461-34	Screw (End Cover to Motor)	-	6
9	WLI-3	Lockwasher, Internal, No. 10	6	6
10	M8643	Blade	4	-
	M8643-3	Blade	-	4
11	M11959	Rotor	1	-
	M13635-3	Rotor	-	1
12	M11966-5	Spring	1	-
	14856	Spring	-	1
13	M8645	Pump Body	1	-
	M8645-3	Pump Body	-	1
14	FHPFJ-4C	Screw (Pump Body to Motor)	2	-
	FHPFJ-7C	Screw (Pump Body to Motor)	-	2
15	M5976	Connector, Male	1	1
16	M10837	Pipe Plug, Hex hd.	1	1
17	M10992-1	Screw, Pressure Adjustment	1	1
18	M10993-1	Spring, Compression (Pressure Relief)	1	1
19	M8940	Ball, 1/4 in. dia.	1	1
20	M17941-2	Motor (Alternate: M11938-2)	1	1

			B-99E	B-140E
26	M17821	Transformer, 5000-Volt (G-E)	@	1 1
	M17822	Transformer (Jefferson) Alternate for M17821	@	-
-	M11084-27	Screw (Transformer to Motor Support Bracket)	*	2 2
27	M11954	Bushing, Strain Relief (Service Cord to Lower Shell)		1 1
28	M15779G8	Service (Extension) Cord	-	1
	M15779G9	Service (Extension) Cord	-	1
29	M13942-4	Connector (Wire Nut)		2 2
30	M16797G1	Fuel Tank	∅	1 -
	M16806G1	Fuel Tank	∅	- 1
31	M3353	Cap, Fuel Tank		1 1
32	M10990-3	Bushing, Rubber (Fuel Filter into Fuel Tank)		1 1
33	M13990	Plug, Pipe, 1/4 in., Sq. hd. (Fuel Tank Drain)		1 1
34		(Not Used)		
35		(Not Used)		
36	M11952	Bracket, Starting Relay Mounting	\$	1 1
-	M11084-27	Screw (Relay Mounting Bracket to Lower Shell)	*\$	1 1
37	M12462-3	Relay, Starting		1 -
	M16786G2	Burner Head Assembly (See Fig. 13, Index No. 5)	@	1 -
	M16803G2	Burner Head Assembly (See Fig. 13, Index No. 5)	@	- 1
1	M16789G2	Filter Assy, Fuel	@	1 -
	M16789G3	Filter Assy, Fuel	@	- 1
	M16790-2	Filter Tube	(L)	-
	M16790-3	Filter Tube		(1)
	M17460	Filter, Fuel (Used with M16790-2 or M16790-3 Filter Tube as alternate for M16789G2 or M16789G3)	(1)	(1)
2	M13849	Nut, Flare		1 1
3	M16741-18	Ring, Retaining		1 1
	M16787C4	Nozzle Adapter Assy		1 -
	M16787G3	Nozzle Adapter Assy		- 1
4	M16791	Connector, Male		1 1
5	M5976	Connector, Male		1 1
6	M8882	Sleeve, Nozzle Seal		1 1
7	M10659-1	Washer, Nozzle Seal		2 2
8	M10809-1	Spring, Nozzle Seal		1 1
9	M18048	Nozzle, Aspirating, 0.61 gph		1 -
	M18022	Nozzle, Aspirating, 1.1 gph		- 1
10	M16535	Adapter, Nozzle		1 1
11	M16895G1	Spark Plug Assy	∅	1 1
12		(Not Available)		
13	M18023	Body, Burner Head		- 1
14	M16534	Body, Burner Head		1 -

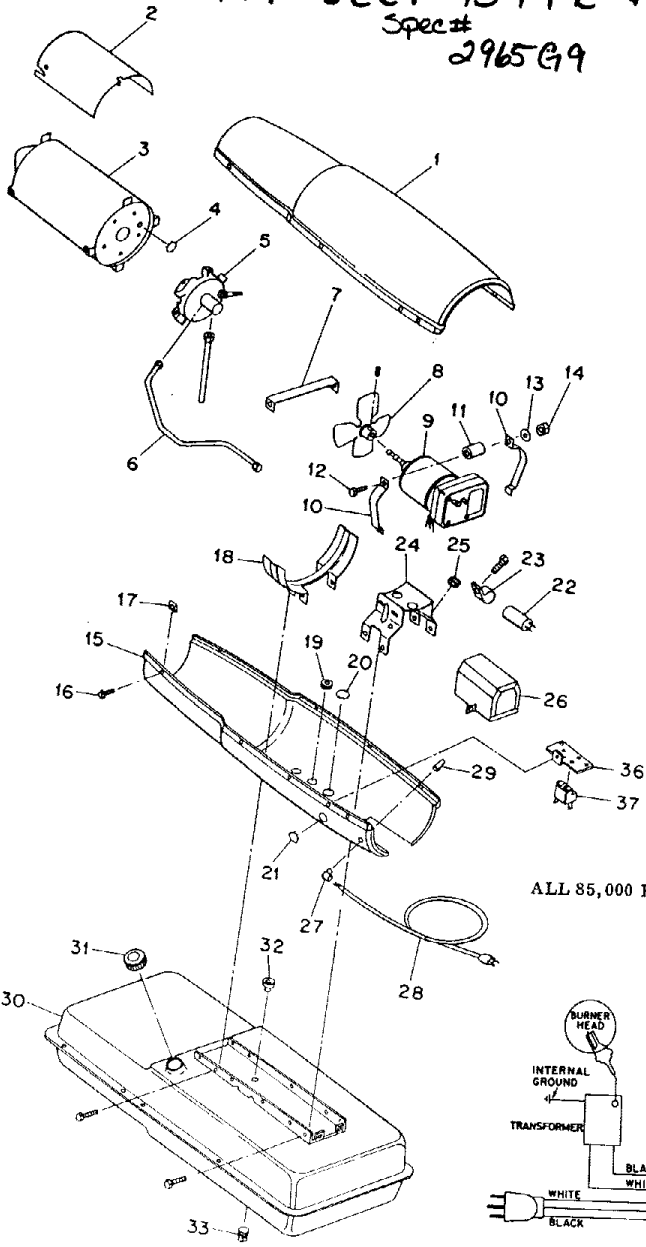
# MASTER B99E & B140E

Spec# 2965G9

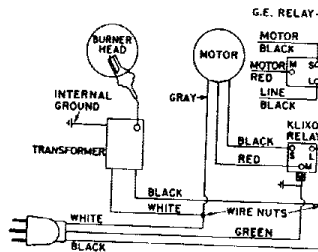
Spec# 2964G18

2968G18

Form # 2351B 4/68



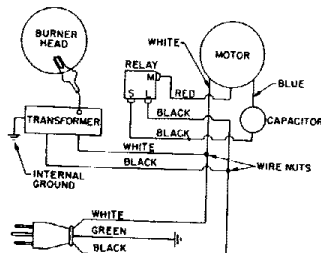
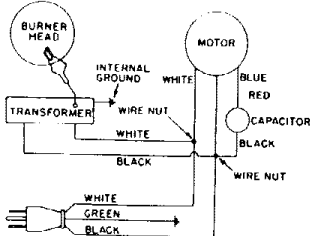
## ALL 85,000 BTU HEATERS



## 150,000 BTU HEATERS

(With Internal Starting Switch)

(With Starting Relay)



				B-99E	B-140E
15	M16777	Shell, Lower	¢	1	-
	M16810	Shell, Lower	¢	-	1
16	M11084-27	Screw (Upper Shell to Lower Shell)	*	6	8
17	M11271-6	Nut, Tinnerman (Upper Shell to Lower Shell)		6	8
18	M12330	Bracket, Shell Support		1	-
	M12828	Bracket, Shell Support		-	1
	M11084-27	Screw (Support Bracket to Lower Shell and Fuel Tank)	*	4	6
	M11084-29	Screw (Lower Shell to Support Bracket)	*	2	2
19	1000576	Grommet (Ignition Cable thru Lower Shell)		2	1
20	M15809	Plug Button (for 17/32" dia. hole)		1	1
21	M15995-2	Plug Button (for 7/16" dia. hole)		-	1
22	M12650-3	Capacitor (Alternate: M12650-4)		-	1
23	M12651	Clamp, Capacitor Mounting (for Mallory Capacitor)		-	1
	M16708	Clamp, Capacitor Mounting (for G-E Capacitor)		-	(1)
	M11084-27	Screw (M12651 Clamp to Motor Support Bracket)	*	-	1
	M15823-26	Screw (M16708 Clamp to Motor Support Bracket)	*	-	(1)
	ST2-8B	Screw (M16708 Clamp)	*	-	(1)
24	M16646	Bracket, Motor Support		1	-
	M16645	Bracket, Motor Support		-	1
	M11084-27	Screw (Motor Support Bracket to Lower Shell and Fuel Tank)	*	6	6
25	1000576	Grommet (Motor Leads thru Motor Support Bracket)		1	-
	1000577	Grommet (Motor and Capacitor Leads thru Motor Support Bracket)		-	2
	M15823-26	Screw (Service Cord Grounding to Motor Support Bracket)	*	-	1
1	M13134G3	Shell, Upper	¢	1	-
1	M17015G1	Shell, Upper	¢	-	1
2	M16679	Deflector, Heat		-	1
3	M16781G1	Combustion Chamber		1	-
	M16887G3	Combustion Chamber		-	1
	M11084-27	Screw (Combustion Chamber attaching, front)	*	2	2
	M11084-29	Screw (Combustion Chamber attaching, rear)	*	2	2
4	M15995	Plug Button (Rear head of Combustion Chamber)		1	1
5	Reference	Burner Head Assembly (See Figure 14)	@	1	1
	M11084-27	Screw (Burner Head to Combustion Chamber)	*	3	3
6	M16879	Air Line	@	1	-
	M16804	Air Line	@	-	1
7	M15807	Strap, Retainer		1	-
	M16871	Strap, Retainer		-	1
	M11084-27	Screw (Retainer Strap to Lower Shell)	*	2	2
8	M12464	Fan, 20° Pitch		1	-
	M17920	Fan, 20° Pitch		-	1
	No Number	Set screw, Soc. hd., cup pt., 1/4-28 (Fan to Motor Shaft)		2	2
9	Reference	Motor Package Assembly (See Figure 15)	@	1	1
10	M16661	Clamp, Motor		4	4
11	M13620	Spacer, Motor Clamp		2	2
12	HCA-10C	Screw (Motor Clamps)	*	2	2
13	WLM-4	Lockwasher, 1/4 in. (Motor Clamps)		2	2
14	NPC-4C	Nut, Hex, 1/4-20 (Motor Clamps)		2	2