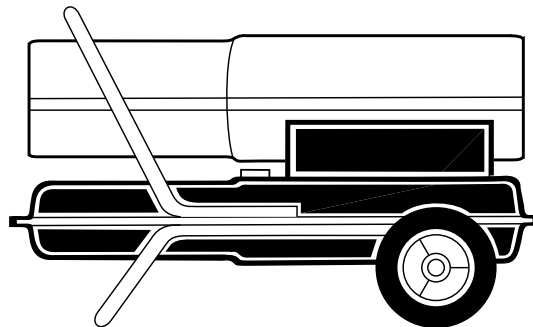


# PORTABLE FORCED AIR HEATER

(WITH BUILT-IN THERMOSTAT)

## OWNER'S MANUAL



Heater Sizes: 70,000 110,000 150,000 and 165,000 Btu/Hr

### IMPORTANT

Read and understand this manual before assembling, starting, or servicing heater. Improper use of heater can cause serious injury. Keep this manual for future reference.



# 70,000 110,000 150,000 AND 165,000 BTU/HR PORTABLE FORCED AIR HEATER

## SAFETY INFORMATION

### WARNINGS

**IMPORTANT: Read this Owner's Manual carefully and completely before trying to assemble, operate, or service this heater. Improper use of this heater can cause serious injury or death from burns, fire, explosion, electrical shock, and carbon monoxide poisoning.**

** DANGER: Carbon monoxide poisoning may lead to death!**

**Carbon Monoxide Poisoning:** Early signs of carbon monoxide poisoning resemble the flu, with headaches, dizziness, and/or nausea. If you have these signs, the heater may not be working properly. **Get fresh air at once!** Have heater serviced. Some people are more affected by carbon monoxide than others. These include pregnant women, persons with heart or lung disease or anemia, those under the influence of alcohol, and those at high altitudes.

Make certain you read and understand all Warnings. Keep this manual for reference. It is your guide to safe and proper operation of this heater.

- Use only kerosene or No. 1 fuel oil to avoid risk of fire or explosion. Never use gasoline, naphtha, paint thinners, alcohol, or other highly flammable fuels.
- Fueling
  - a) Personnel involved with fueling shall be qualified and thoroughly familiar with the manufacturer's instructions and applicable federal, state, and local regulations regarding the safe fueling of heating units.

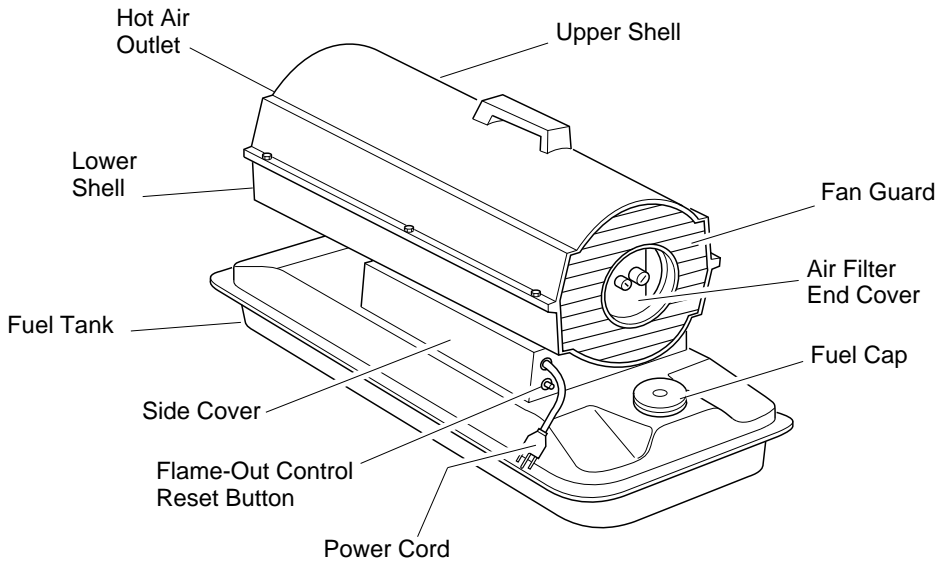
- b) Only the type of fuel specified on the heater's data plate shall be used.
  - c) All flame, including the pilot light, if any, shall be extinguished and the heater allowed to cool, prior to fueling.
  - d) During fueling, all fuel lines and fuel-line connections shall be inspected for leaks. Any leaks shall be repaired prior to returning the heater to service.
  - e) At no time shall more than one day's supply of heater fuel be stored inside a building in the vicinity of the heater. Bulk fuel storage shall be outside the structure.
  - f) All fuel storage shall be located a minimum of 25 feet from heaters, torches, welding equipment, and similar sources of ignition (exception: the fuel reservoir integral with the heater unit).
  - g) Whenever possible, fuel storage shall be confined to areas where floor penetrations do not permit fuel to drip onto or be ignited by a fire at lower elevation.
  - h) Fuel storage shall be in accordance with the federal, state, or local authority having jurisdiction.
- Never use heater where gasoline, paint thinner, or other highly flammable vapors are present.
  - Follow all local ordinances and codes when using heater.
  - Heaters used in the vicinity of tarpaulins, canvas, or similar enclosure materials shall be located a safe distance from such materials. The recommended minimum safe distance is 10 feet. It is further recommended that these enclosure materials be of a fire retardant nature. These enclosure materials shall be securely fastened to prevent them from igniting or from upsetting the heater due to wind action.

- Use only in well vented areas. Before using heater, provide at least a three-square-foot opening of fresh, outside air for each 100,000 Btu/Hr of rating. This heater produces carbon monoxide, which is listed by the State of California as a reproductive toxin under Proposition 65.
- Use only in places free of flammable vapors or high dust content.
- Use only with the electrical voltage and frequency specified on model plate.
- Use only a three-prong, grounded extension cord.
- Minimum heater clearances from combustibles:  
Outlet: 8 Ft.      Sides: 4 Ft.  
Top: 4 Ft.      Rear: 4 Ft.
- Locate heater on a stable and level surface while hot or running or a fire may occur.
- When moving or storing heater, keep heater in a level position or fuel spillage may occur.
- Keep children and animals away from heater.
- Unplug heater when not in use.
- This heater is equipped with a thermostat. Heater may start at anytime.
- Never use heater in living or sleeping areas.
- Never block air inlet (rear) or air outlet (front) of heater.
- Never move, handle, refuel, or service a hot, operating, or plugged-in heater.
- Never attach duct work to front or rear of heater.

# OWNER'S MANUAL

## PRODUCT IDENTIFICATION

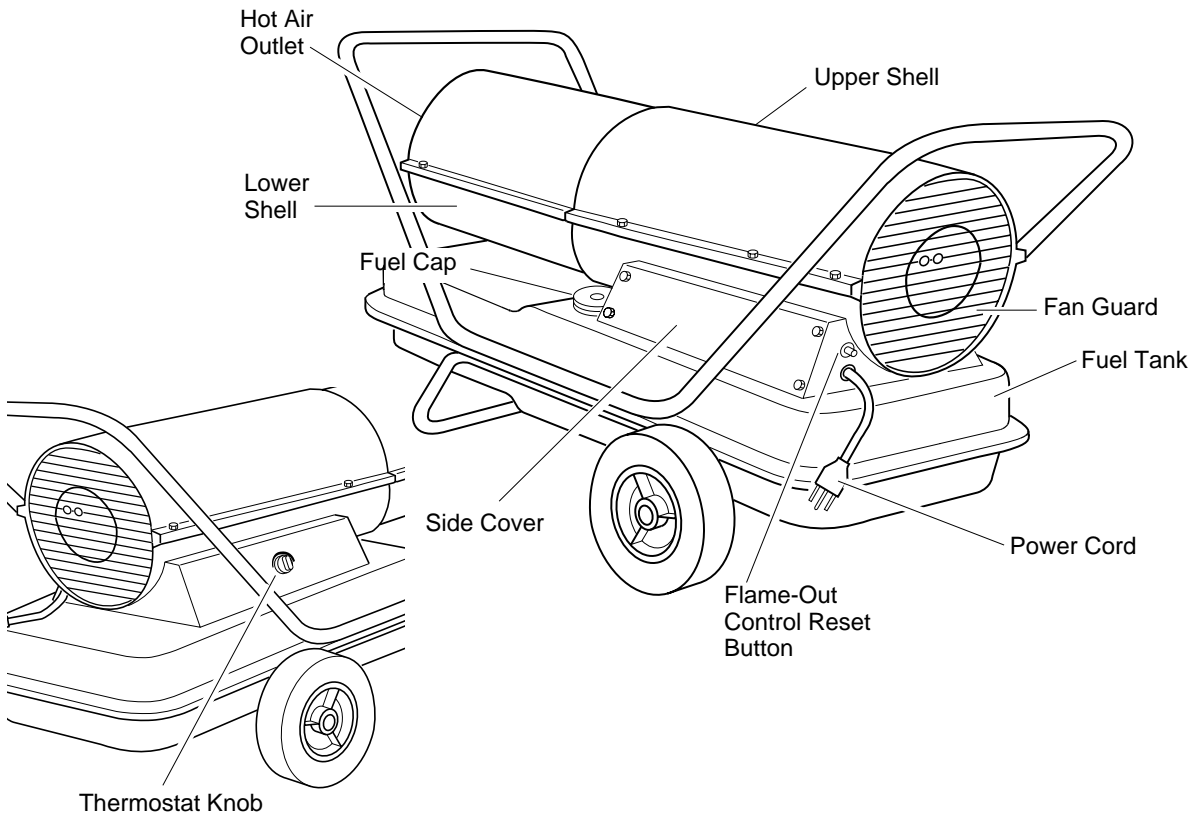
### 70,000 Btu/Hr Model



## UNPACKING

1. Remove all packing items applied to heater for shipment.
2. Remove all items from carton.
3. Check items for shipping damage. If heater is damaged, promptly inform dealer where you bought heater.

### 110,000 150,000 and 165,000 Btu/Hr Models



# 70,000 110,000 150,000 AND 165,000 BTU/HR PORTABLE FORCED AIR HEATER

## ASSEMBLY

The 110,000 150,000 and 165,000 Btu/Hr models are furnished with wheels and handle(s). Wheels, handle(s), and the mounting hardware are found in the shipping carton.

### TOOLS NEEDED

- Medium Phillips Screwdriver
- 3/8" Open or Adjustable Wrench
- Hammer

1. Slide axle through wheel support frame. Install wheels on axle.

**IMPORTANT:** When installing wheels, point extended hub of wheels toward wheel support frame (see Figure 1).

2. Place cap nuts on axle ends. Gently tap with hammer to secure.
3. Place heater on wheel support frame. Make sure air inlet end (rear) of heater is over wheels. Line up holes on fuel tank flange with holes on wheel support frame.
4. Place handle(s) on top of fuel tank flange. Insert screws through handle(s), fuel tank flange, and wheel support frame. Attach nut finger tight after each screw is inserted.
5. After all screws are inserted, tighten nuts firmly.

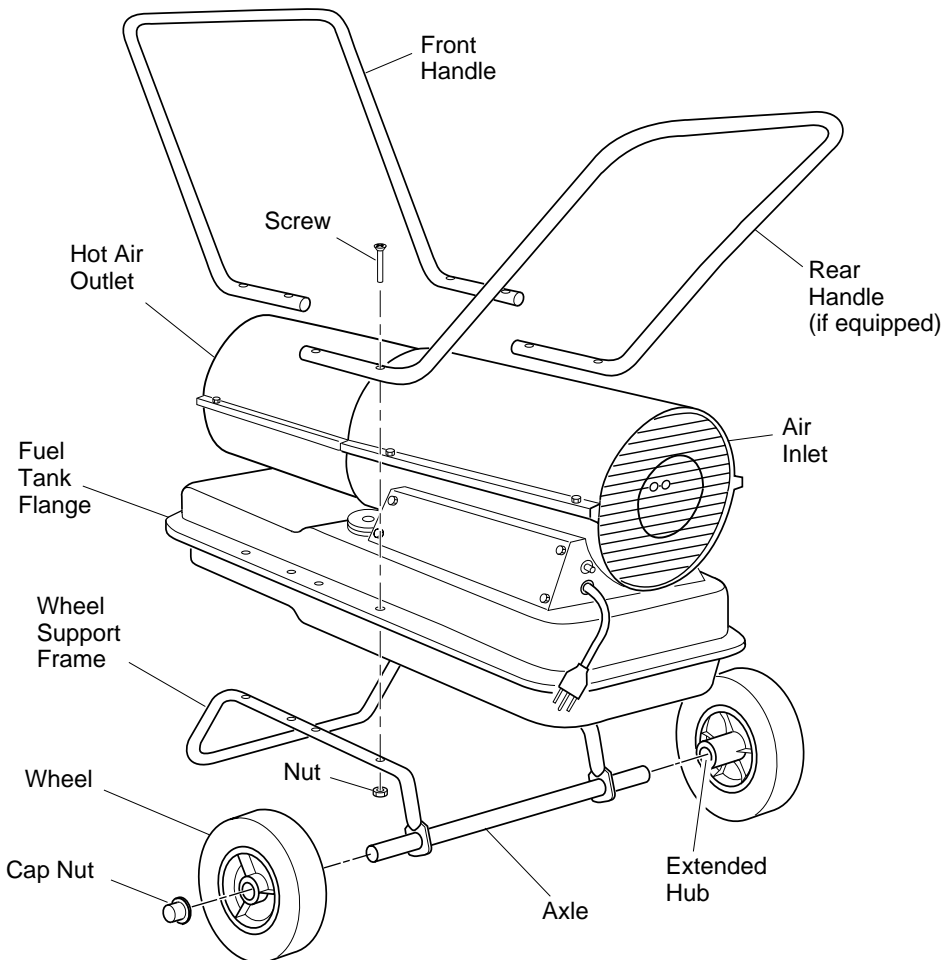


Figure 1 - Wheel and Handle Assembly

## FUELS

**WARNING:** Use only kerosene or No. 1 fuel oil to avoid risk of fire or explosion. Never use gasoline, naphtha, paint thinners, alcohol, or other highly flammable fuels.

Do not use heavy fuels such as No. 2 fuel oil or No. 2 Diesel. Using heavy fuels will result in:

- clogged fuel filter and nozzle
- carbon build up on spark plug
- the need of non-toxic anti-icer in fuel during very cold weather

**IMPORTANT:** Use a KEROSENE ONLY storage container. Be sure storage container is clean. Foreign matter such as rust, dirt, or water will cause the flame-out control to shut down heater. Foreign matter may also require you to clean fuel system often.

## VENTILATION

**WARNING:** Follow the minimum fresh, outside air ventilation requirements. If proper fresh, outside air ventilation is not provided, carbon monoxide poisoning can occur. Provide proper fresh, outside air ventilation before running heater.

Provide at least a three-square-foot opening of fresh, outside air for each 100,000 Btu/Hr rating. Provide extra fresh air if more heaters are being used. *Example:* A 165,000 Btu/Hr heater requires one of the following:

- a two-car garage door (16 foot wide opening) raised four inches
- a single-car garage door (9 foot wide opening) raised seven inches
- two windows (30 inch wide opening, each) raised twelve inches

# OWNER'S MANUAL

## THEORY OF OPERATION

**The Fuel System:** The air pump forces air through the air line. The air is then pushed through the burner head nozzle. This air causes fuel to lift from the tank. A fine mist of fuel is sprayed into the combustion chamber.

**The Air System:** The motor turns the fan. The fan pushes air into and around the combustion chamber. This air is heated and provides a stream of clean, hot air.

**The Ignition System:** The electronic ignitor sends voltage to the spark plug. The spark plug ignites the fuel and air mixture.

**The Flame-Out Control System:** This system causes the heater to shut down if the flame goes out.

## OPERATION

**⚠ WARNING: Review and understand the warnings in the Safety Information section, page 2. They are needed to safely operate this heater. Follow all local codes when using this heater.**

### TO START HEATER

1. Follow all ventilation and safety information.
2. Fill fuel tank with kerosene or No. 1 fuel oil.
3. Attach fuel cap.
4. Plug power cord of heater into three-prong, grounded extension cord. Extension cord must be at least six feet long.

### Extension Cord Wire Size Requirements

6 to 10 feet long, use 18 AWG rated cord  
11 to 100 feet long, use 16 AWG rated cord

101 to 200 feet long, use 14 AWG rated cord

5. Plug extension cord into standard 120 volt/60 hertz, three-hole, grounded outlet. Adjust thermostat to desired setting. If heater does not start, thermostat setting may be too low. Turn thermostat knob to higher position to start heater. If thermostat is in HIGH position and heater still will not start, push in flame-out control reset button (see Figure 3).

### TO STOP HEATER

Unplug extension cord from outlet.

### TO RESTART HEATER

1. Wait 2 minutes after stopping heater.
2. Repeat steps under *To Start Heater*.

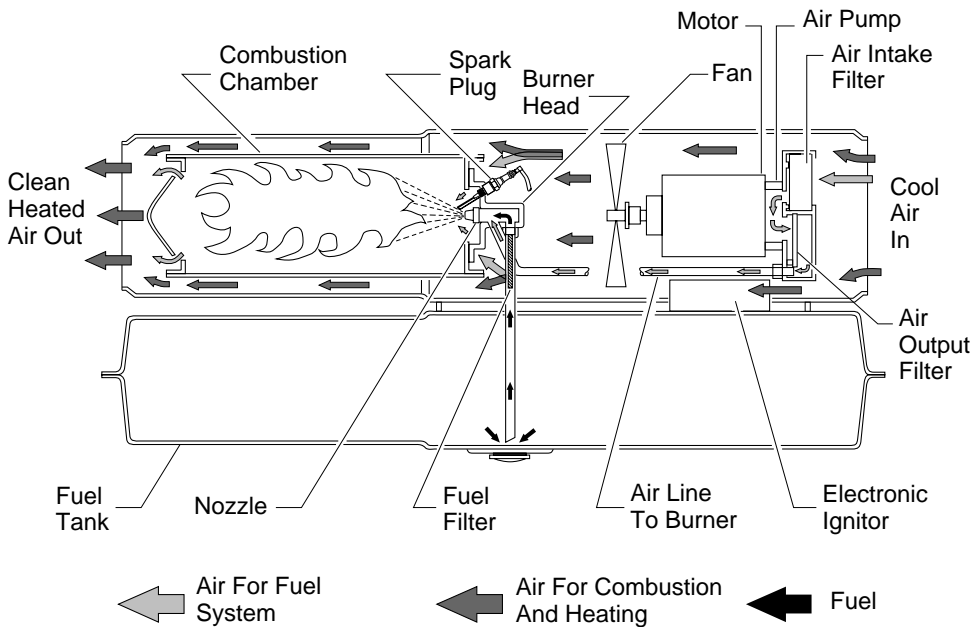
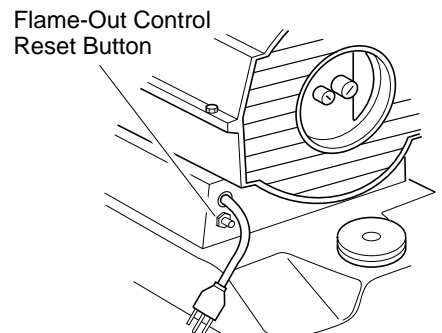
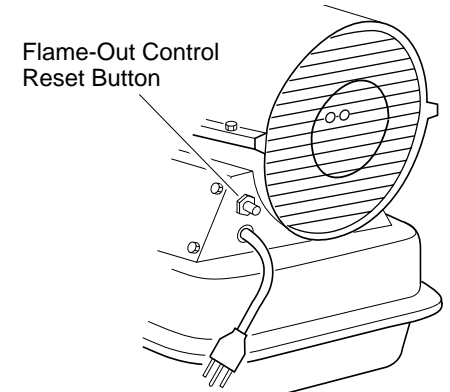


Figure 2 - Cross Section Operational View



70,000 Btu/Hr Model



110,000 150,000 and 165,000 Btu/Hr Models

Figure 3 - Flame-Out Control Reset Button

# 70,000 110,000 150,000 AND 165,000 BTU/HR PORTABLE FORCED AIR HEATER

## STORING, TRANSPORTING, OR SHIPPING

*Note:* If shipping, transport companies require fuel tanks to be empty.

1. Drain fuel tank.  
*Note:* Some models have drain plug on underside of fuel tank. If so, remove drain plug to drain all fuel. If heater does not have drain plug, drain fuel through fuel cap opening. Be sure all fuel is removed.
2. Replace drain plug if provided.
3. If any debris is noted in old fuel, add 1 or 2 quarts of clean kerosene to tank, stir, and drain again. This will prevent excess debris from clogging filters during future use.
4. Replace fuel cap or drain plug. Properly dispose of old and dirty fuel. Check with local automotive service stations that recycle oil.
5. If storing, store heater in dry place. Make sure storage place is free of dust and corrosive fumes.

**IMPORTANT:** Do not store kerosene over summer months for use during next heating season. Using old fuel could damage heater.

## PREVENTATIVE MAINTENANCE SCHEDULE


**⚠ WARNING:** Never service heater while it is plugged in, operating, or hot. Severe burns and electrical shock can occur.

Item	How Often	How To
Fuel tank	Flush every 150-200 hours of operation or as needed	See <i>Storing, Transporting, or Shipping</i> , column 1
Air output and lint filters	Replace every 500 hours of operation or once a year	See <i>Air Output, Air Intake, and Lint Filters</i> , page 8
Air intake filter	Wash and dry with soap and water every 500 hours of operation or replace as needed	See <i>Air Output, Air Intake, and Lint Filters</i> , page 8
Fuel filter	Clean twice a heating season or replace as needed	See <i>Fuel Filter</i> , page 9
Spark plug	Clean and regap every 600 hours operation or replace as needed	See <i>Spark Plug</i> , page 9
Fan blades	Clean each season or as needed	See <i>Fan</i> , page 8
Motor	Not required/permanently lubricated	

# OWNER'S MANUAL

## TROUBLESHOOTING

 **WARNING: Never service heater while it is plugged in, operating, or hot. Severe burns and electrical shock can occur.**

OBSERVED FAULT	POSSIBLE CAUSE	REMEDY
Heater ignites, but flame-out control shuts off heater after a short period of time	<ol style="list-style-type: none"><li>1. Wrong pump pressure</li><li>2. Dirty air output, air intake and lint filters</li><li>3. Dirty fuel filter</li><li>4. Dirt in nozzle</li><li>5. Dirty photocell lens</li><li>6. Bad flame-out control</li></ol>	<ol style="list-style-type: none"><li>1. See <i>Pump Pressure Adjustment</i>, page 9</li><li>2. See <i>Air Output, Air Intake and Lint Filters</i>, page 8</li><li>3. See <i>Fuel Filter</i>, page 9</li><li>4. See <i>Nozzle</i>, page 10</li><li>5. Clean photocell lens</li><li>6. Replace flame-out control</li></ol>
Heater will not ignite, but motor runs for a short period of time	<ol style="list-style-type: none"><li>1. Wrong pump pressure</li><li>2. Carbon deposits on spark plug and/or improper gap</li><li>3. Dirty fuel filter</li><li>4. Dirt in nozzle</li><li>5. Water in fuel tank</li></ol>	<ol style="list-style-type: none"><li>1. See <i>Pump Pressure Adjustment</i>, page 9</li><li>2. See <i>Spark Plug</i>, page 9</li><li>3. See <i>Fuel Filter</i>, page 9</li><li>4. See <i>Nozzle</i>, page 10</li><li>5. Drain and flush fuel tank with clean kerosene</li></ol>
 <b>WARNING: High voltage!</b>		
	<ol style="list-style-type: none"><li>6. Electronic ignitor not grounded</li><li>7. Bad electronic ignitor</li></ol>	<ol style="list-style-type: none"><li>6. See <i>Storing, Transporting, or Shipping</i>, page 6</li><li>7. Make sure electronic ignitor mounting is tight. Replace electronic ignitor</li></ol>
Motor does not start when heater is plugged in, fan rotates slowly or does not turn	<ol style="list-style-type: none"><li>1. Thermostat setting is too low</li><li>2. Flame-out control not reset</li><li>3. Solid state relay not allowed to reset</li><li>4. Binding pump rotor</li></ol>	<ol style="list-style-type: none"><li>1. Turn thermostat knob to a higher setting</li><li>2. Press flame-out control reset button</li><li>3. Wait two minutes before trying to restart heater</li><li>4. If fan is hard to turn, see <i>Pump Rotor</i>, page 10</li></ol>

# 70,000 110,000 150,000 AND 165,000 BTU/HR PORTABLE FORCED AIR HEATER

## SERVICE PROCEDURES

**⚠ WARNING: Never service heater while it is plugged in, operating, or hot. Severe burns and electrical shock can occur.**

### UPPER SHELL REMOVAL

1. Remove screws along each side of heater using 5/16" nut-driver. These screws attach upper and lower shells together.
2. Lift upper shell off.
3. Remove fan guard.

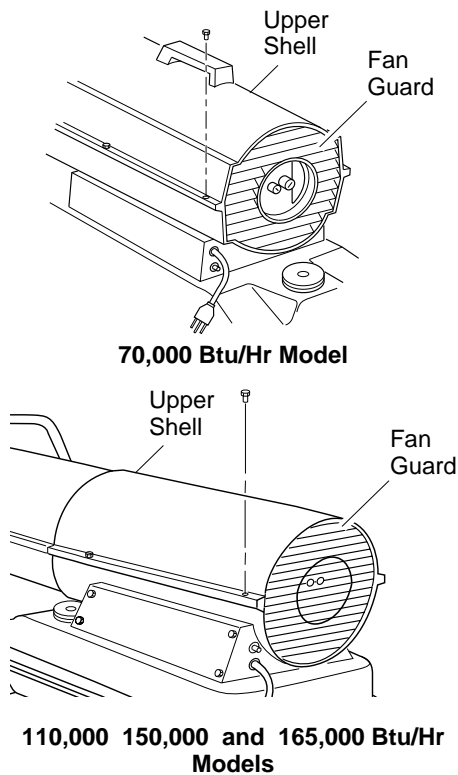


Figure 4 - Upper Shell Removal

### FAN

**IMPORTANT:** Remove fan from motor shaft before removing motor from heater. The weight of the motor resting on the fan could damage the fan pitch.

1. Remove upper shell (see column 1).
2. Use 1/8" allen wrench to loosen setscrew which holds fan to motor shaft.
3. Slip fan off motor shaft.
4. Clean fan using soft cloth moistened with kerosene or solvent.
5. Dry fan thoroughly.
6. Replace fan on motor shaft. Place fan hub flush with end of motor shaft (see Figure 5).
7. Place setscrew on flat of shaft. Tighten setscrew firmly (40-50 inch-pounds).
8. Replace fan guard and upper shell.

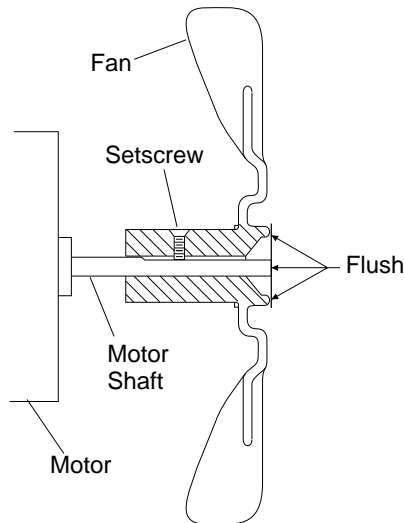


Figure 5 - Fan Cross Section

### AIR OUTPUT, AIR INTAKE, AND LINT FILTERS

1. Remove upper shell (see column 1).
2. Remove filter end cover screws using 5/16" nut-driver.
3. Remove filter end cover.
4. Replace air output and lint filters.
5. Wash or replace air intake filter (see *Preventative Maintenance Schedule*, page 6).
6. Replace filter end cover.
7. Replace fan guard and upper shell.

**IMPORTANT:** Do not oil filters.

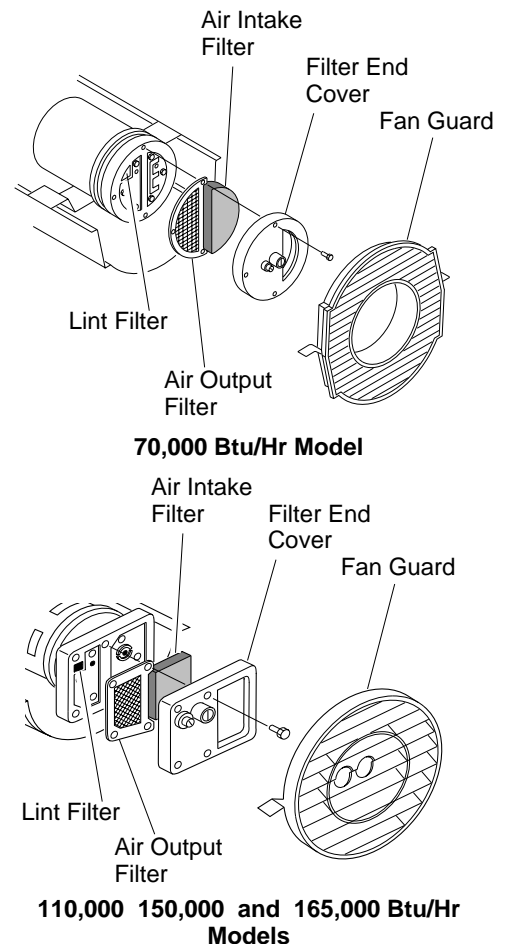


Figure 6 - Air Output, Air Intake, and Lint Filters



## SERVICE PROCEDURES

*Continued*

### PUMP PRESSURE ADJUSTMENT

1. Remove pressure gauge plug from filter end cover.
2. Install accessory pressure gauge (part number HA1180).
3. Start heater (see *Operation*, page 5). Allow motor to reach full speed.
4. Adjust pressure. Turn relief valve to right to increase pressure. Turn relief valve to left to decrease pressure.

#### Correct Pump Pressure

70,000 Btu/Hr Model: 4.0 PSI

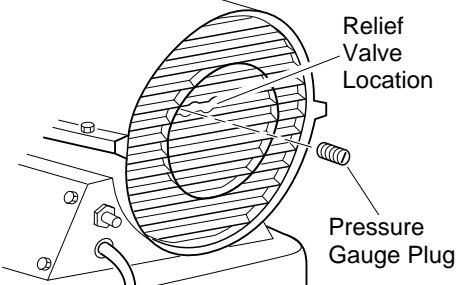
110,000 Btu/Hr Model: 4.5 PSI

150,000 Btu/Hr Model: 5.0 PSI

165,000 Btu/Hr Model: 5.4 PSI

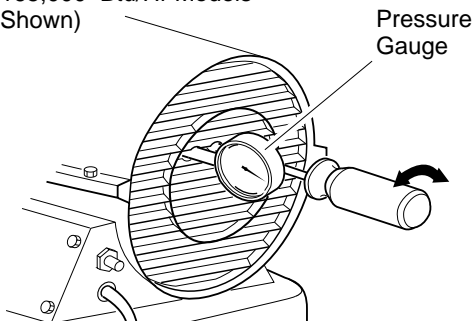
5. Remove pressure gauge. Replace pressure gauge plug in filter end cover.

(110,000 150,000 and 165,000 Btu/Hr Models Shown)



**Figure 7 - Pressure Gauge Plug Removal**

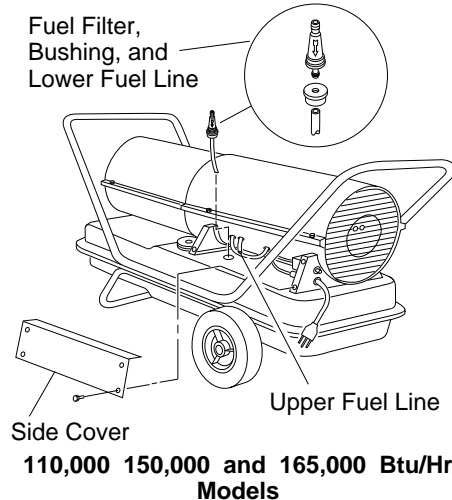
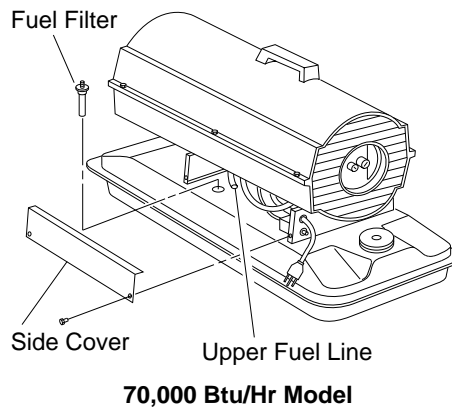
(110,000 150,000 and 165,000 Btu/Hr Models Shown)



**Figure 8 - Adjusting Pump Pressure**

### FUEL FILTER

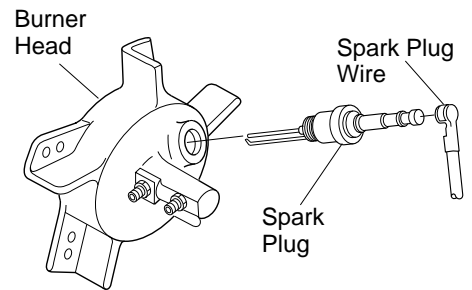
1. Remove side cover screws using 5/16" nut-driver.
2. Remove side cover.
3. Pull upper fuel line off fuel filter neck.
4. Carefully pry bushing, fuel filter, and lower fuel line (110,000, 150,000 and 165,000 Btu/Hr models only) out of fuel tank.
5. Wash fuel filter with clean fuel and replace in tank.
6. Attach upper fuel line to fuel filter neck.
7. Replace side cover.



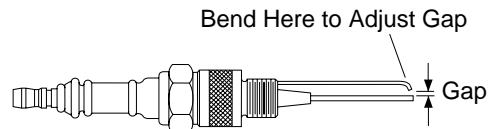
**Figure 9 - Fuel Filter Removal**

### SPARK PLUG

1. Remove upper shell (see page 8).
2. Remove fan (see page 8).
3. Remove spark plug wire from spark plug.
4. Remove spark plug from burner head using 13/16" open-end wrench.
5. Clean and regap spark plug electrodes as follows:  
70,000 Btu/Hr Model – .055" gap  
110,000 and 150,000 Btu/Hr Models – .075" gap  
165,000 Btu/Hr Model – .085" gap
6. Install spark plug in burner head.
7. Attach spark plug wire to spark plug.
8. Replace fan (see page 8).
9. Replace fan guard and upper shell.



**Figure 10 - Spark Plug Removal**



**Figure 11 - Spark Plug Gap**

# 70,000 110,000 150,000 AND 165,000 BTU/HR PORTABLE FORCED AIR HEATER

## SERVICE PROCEDURES

### Continued

#### NOZZLE

1. Remove upper shell (see page 8).
2. Remove fan (see page 8).
3. Remove fuel and air line hoses from burner head.
4. Remove spark plug wire from spark plug.
5. Remove spark plug from burner head using 13/16" open-end wrench.
6. Remove three screws using 5/16" nut-driver and remove burner head from combustion chamber.
7. Place burner head into vise and lightly tighten.
8. Carefully remove nozzle from burner head using 5/8" socket wrench (see Figure 13).
9. Blow compressed air through face of nozzle. This will free any dirt in nozzle area.
10. Inspect nozzle seal for damage.
11. Replace nozzle into burner head and tighten firmly (80-110 inch-pounds).
12. Attach burner head to combustion chamber.
13. Install spark plug in burner head.
14. Attach spark plug wire to spark plug.
15. Attach fuel and airline hoses to burner head.
16. Replace fan (see page 8).
17. Replace fan guard and upper shell.

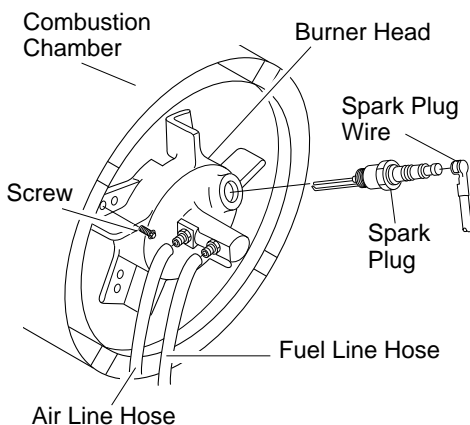


Figure 12 - Removing Burner Head

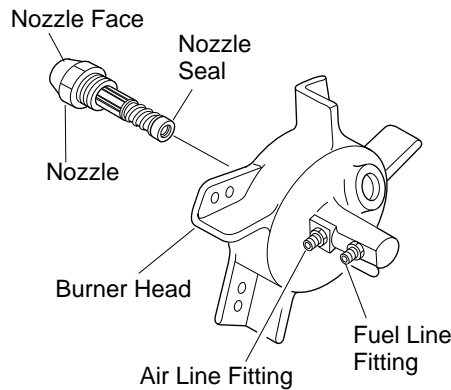


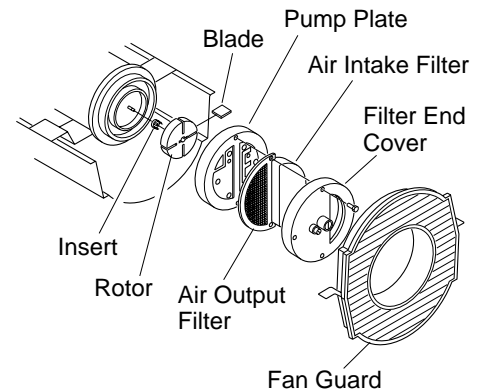
Figure 13 - Removing Nozzle

#### PUMP ROTOR (Procedure if rotor is binding)

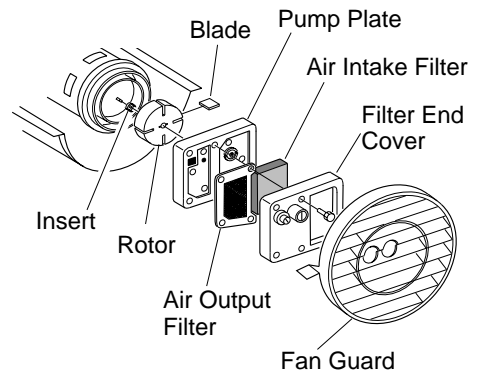
1. Remove upper shell (see page 8).
2. Remove filter end cover screws using 5/16" nut-driver.
3. Remove filter end cover and air filters.
4. Remove pump plate screws using 5/16" nut-driver.
5. Remove pump plate.
6. Remove rotor, insert, and blades.
7. Check for debris in pump. If debris is found, blow out with compressed air.
8. Install insert and rotor.
9. Check gap on rotor. Adjust to .003"/.004" if needed (see Figure 15).
10. Install blades, pump plate, air filters, and filter end cover.
11. Replace fan guard and upper shell.
12. Adjust pump pressure (see page 9).
13. Perform steps 1 through 6 above.
14. Place fine grade sandpaper (600 grit) on flat surface. Sand rotor lightly in "figure 8" motion four times (see Figure 16).
15. Reinstall insert and rotor.
16. Perform steps 10 through 12 above.

**Note:** Rotate rotor one full turn to insure the gap is .003"/.004" at tightest position. Adjust if needed.

**Note:** If rotor is still binding, proceed as follows.



70,000 Btu/Hr Model



110,000 150,000 and 165,000 Btu/Hr Models

Figure 14 - Rotor Location

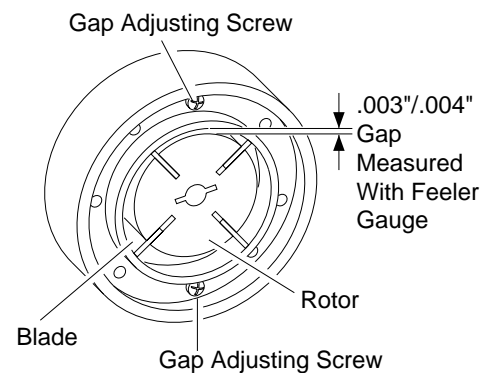


Figure 15 - Gap Adjusting Screw Locations

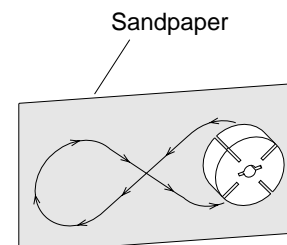


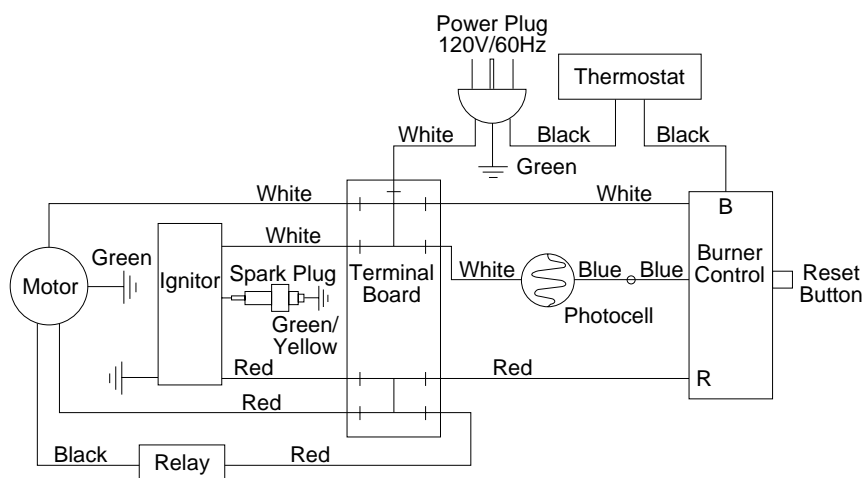
Figure 16 - Sanding Rotor

# OWNER'S MANUAL

## SPECIFICATIONS

Output Rating (Btu/Hr.)	70,000	110,000	150,000	165,000
Fuel	Use Only Kerosene or No. 1 Fuel Oil			
Fuel Tank Capacity (U.S. Gal.)	5.0	9.0	13.5	13.5
Fuel Consumption (Gal. Per Hr.)	0.52	0.82	1.10	1.20
Electric Requirements	120 V/60 Hz (Same all models)			
Amperage (Normal Run)	2.5	4.5	4.5	4.5
Hot Air Output (CFM)	250	490	500	500
Motor RPM	3450 (Same all models)			
Motor HP	1/8	1/5	1/5	1/4
Shipping Weight (Approx. lbs.)	37	58	67	69
Heater Weight Without Fuel (Approx. lbs.)	32	49	56	58

## WIRING DIAGRAM



## MAINTENANCE KITS

Kit	70,000	110,000	150,000	165,000
Flame-Out Control	HA3003	HA3003	HA3003	HA3003
Spark Plug	HA3012	HA3012	HA3012	HA3012
Air Gauge Kit	HA1180	HA1180	HA1180	HA1180
Fuel Tank Filter Screen	HA2210	HA2210	HA2210	HA2210
Filter Kit	HA3014	HA3017	HA3017	HA3017
Nozzle Kit	HA3008	HA3022	HA3010	HA3023
Rotor/Air Pump Kit	HA3004	HA3004	HA3004	HA3004
Photocell	HA3019	HA3019	HA3019	HA3019
Pump Adjustment Handle	—	HA2203	HA2204	HA2204

## REPLACEMENT PARTS

*Note:* Use only original replacement parts. This will protect your warranty coverage for parts replaced under warranty.

### PARTS UNDER WARRANTY

Contact authorized dealer from whom you purchased this product. If they cannot supply original replacement part(s), call DESA International's Technical Service Department at 1-800-323-5190 for referral information.

When contacting your dealer or DESA International, have ready:

- your name
- your address
- model number of your heater
- how heater was malfunctioning
- purchase date

Usually, we will ask you to return the defective part to the factory.

### PARTS NOT UNDER WARRANTY

Contact authorized dealers of this product. If they cannot supply original replacement part(s), call DESA International's Parts Department at 1-800-972-7879 for referral information.

When calling DESA International, have ready:

- model number of your heater
- the replacement part number

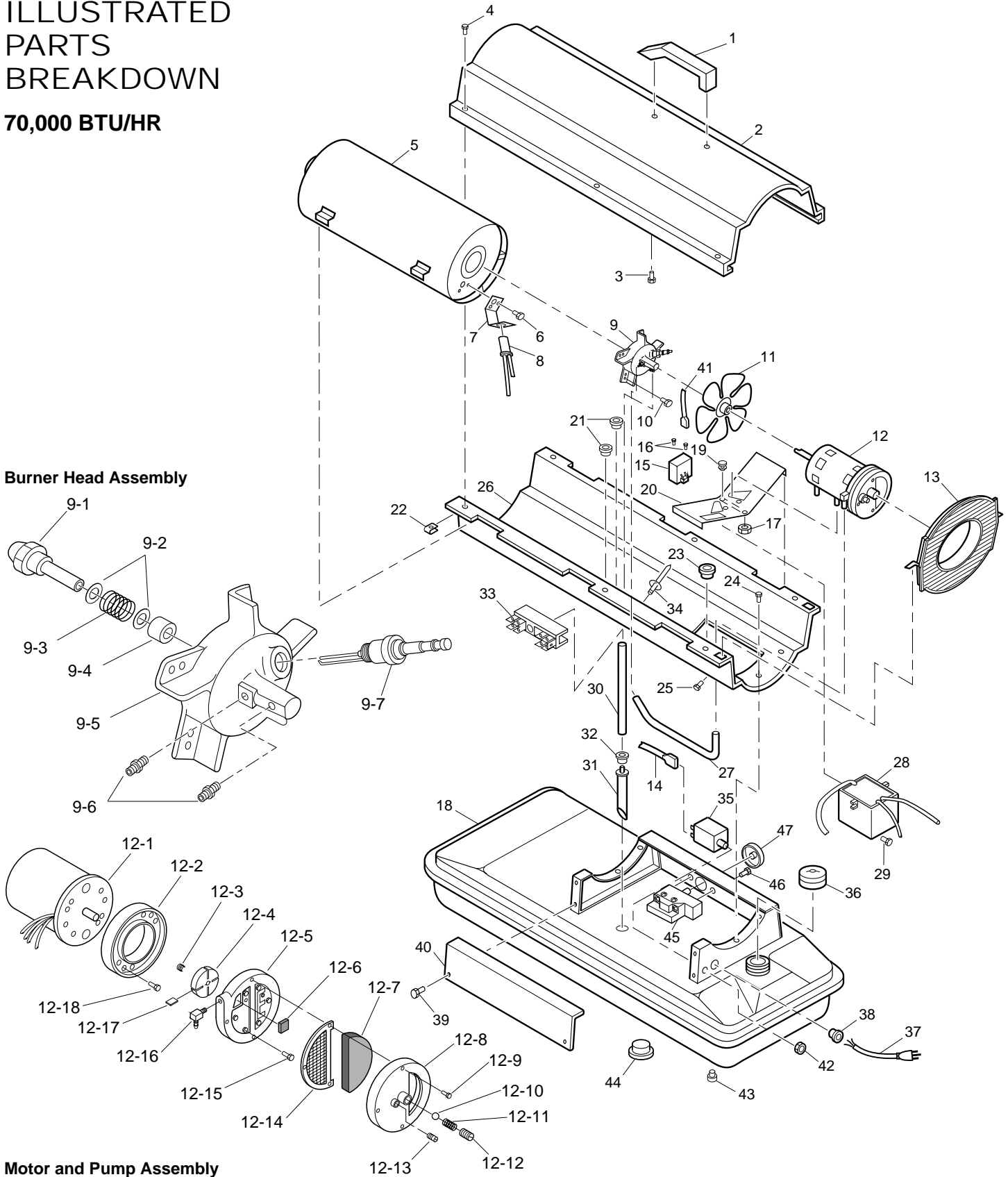
## TECHNICAL SERVICE

You may have further questions about installation, operation, or troubleshooting. If so, contact DESA International's Technical Service Department at 1-800-323-5190.

# 70,000 110,000 150,000 AND 165,000 BTU/HR PORTABLE FORCED AIR HEATER

## ILLUSTRATED PARTS BREAKDOWN

**70,000 BTU/HR**



# OWNER'S MANUAL

## PARTS LIST

70,000 BTU/HR

This list contains replaceable parts used in your heater. When ordering parts, be sure to provide the correct model and serial numbers (from the model plate), then the part number and description of the desired part.

KEY NO.	PART NUMBER	PART DESCRIPTION	QTY.	KEY NO.	PART NUMBER	PART DESCRIPTION	QTY.
1	M51104-01	Handle	1	21	M30865-02	Bushing	2
2	098511-54	Upper Shell (B70BT)	1	22	M11271-8	Clip Nut	6
	098511-36	Upper Shell (R70CT)	1	23	M50104-02	Bushing	1
3	M11084-29	Screw, #10-16 x 3/4"	2	24	M11084-26	Screw, #10-16 x 3/8"	6
4	100647-01	Screw, #10-16 x 1/2"	6	25	M10908-14	Screw, #8-32 x 3/8"	1
5	098512-44	Combustion Chamber	1	26	098511-12	Lower Shell (B70BT)	1
6	M10908-2	Screw, #6-32 x 3/8"	2		098511-18	Lower Shell (R70CT)	1
7	M16660	Photocell Bracket	1	27	M29652-04	Airline	1
8	HA3019	Photocell Assembly	1	28	102482-01	Ignitor Kit	1
9	***	Burner Head Assembly	1	29	M11084-29	Screw, #10-16 x 3/4"	2
9-1	HA3008	Nozzle with Sleeve	1	30	079973-01	Fuel Line	1
9-2	M10659-1	Nozzle Seal Washer	2	31	M50876-05	Fuel Filter (With Bushing)	1
9-3	M10809-1	Nozzle Seal Spring	1	32	M10990-3	Rubber Bushing	1
9-4	M8882	Nozzle Sleeve	1	33	099125-03	Terminal Board	1
9-5	M51098-02	Burner Head Body	1	34	099157-01	Rivet	1
9-6	M50820-01	Barb Fitting	2	35	HA3003	Flame-Out Control	1
9-7	HA3012	Spark Plug	1	36	097702-01	Fuel Cap Kit (Includes Gasket)	1
10	M11084-27	Screw, #10-16 x 1/2"	3				
11	M51107-01	Fan	1	37	098219-27	Power Cord	1
12	***	Motor and Pump Assembly	1	38	M11143-1	Strain Relief Bushing	1
12-1	097308-02	Motor	1	39	M11084-26	Screw, #10-16 x 3/8"	2
12-2	079975-02	Pump Body	1	40	M50899-03AA	Side Cover	1
12-3	M22009**	Insert	1	41	079010-18	Wire Assembly (Red, 16")	1
12-4	M22456-1**	Rotor	1	42	099177-01	Hex Nut	1
12-5	M29608	Pump End Cover	1	43	M51017-01	Cushion Grommet (B70BT)	3
12-6	M29632**	Lint Filter	1	44	M27417	Drain Plug (B70BT) (Includes "O" Ring)	1
12-7	M29633**	Intake Filter	1				
12-8	M29609	Filter End Cover	1	45	097657-02	Thermostat	1
12-9	M12461-31	Screw, #10-32 x 1"	3	46	M10908-1	Screw, #6-32 x 1/4"	2
12-10	M27694**	Adjusting Screw	1	47	104905-01	Thermostat Knob	1
12-11	M10993-1**	Pressure Relief Spring	1	<b>PARTS AVAILABLE - NOT SHOWN</b>			
12-12	M22997**	Plug	1				
12-13	M8940**	Steel Ball (1/4" Dia.)	1		101118-02	General Info. Decal (B70BT)	1
12-14	M29612-01**	Output Filter	1		101118-01	General Info. Decal (R70CT)	1
12-15	M12461-31	Screw, #10-32 x 1"	6		M9900-192	Combustion Chamber Ground Wire	1
12-16	M50016	Elbow, 90° (Barb Fitting)	1		099650-01	Wire Clip (Secures thermostat and power cord wires)	1
12-17	M8643**	Blade	4	<b>OPTIONAL ACCESSORIES</b>			
12-18	FHPF3-5C	Screw, #10-32 x 5/8"	2				
13	M51105-01	Fan Guard	1		HA3004	Rotor Kit (M22456-1, M22009, M8643)	
14	M16841-57	Wire Assembly (Red, 6" )	1		HA3014	Filter Kit (M29632, M29633, M29612-01)	
15	097061-01	Solid State Relay	1		HA3020	Pump Kit (M27694, M10993-1, M22997, M8940)	
16	M15823-39	Screw, #8-18 x 1/2"	2				
17	NTC-4C	Hex Lock Nut, 1/4-20	2				
18	098513-78	Fuel Tank (B70BT)	1				
	098513-77	Fuel Tank (R70CT)	1				
19	M50631	Rubber Bumper	2				
20	101205-01	Motor Bracket	1				

\*\* See OPTIONAL ACCESSORIES

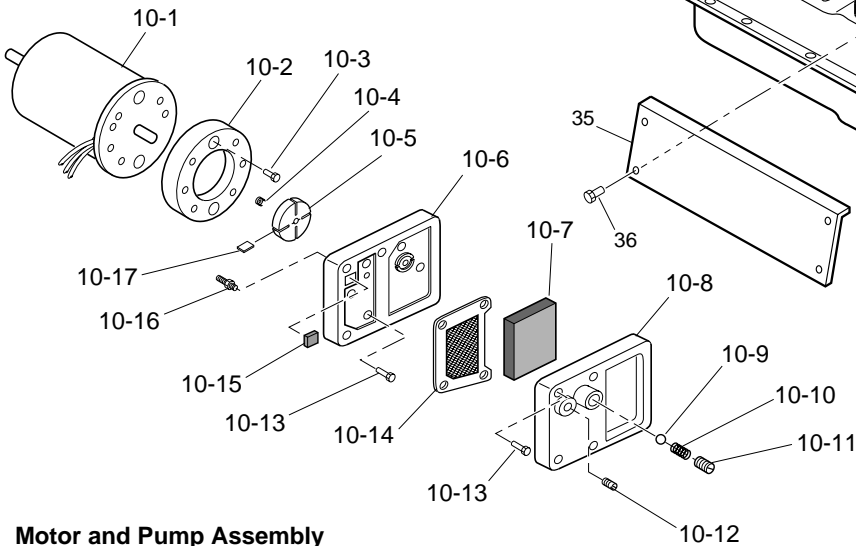
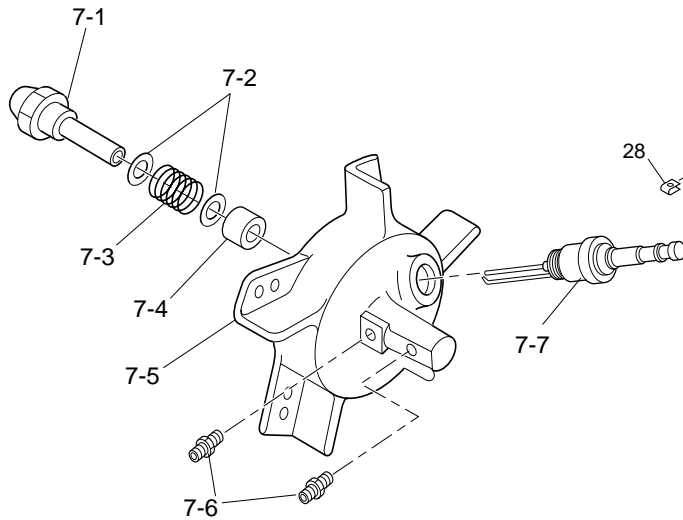
\*\*\* Not available as an assembly.

# 70,000 110,000 150,000 AND 165,000 BTU/HR PORTABLE FORCED AIR HEATER

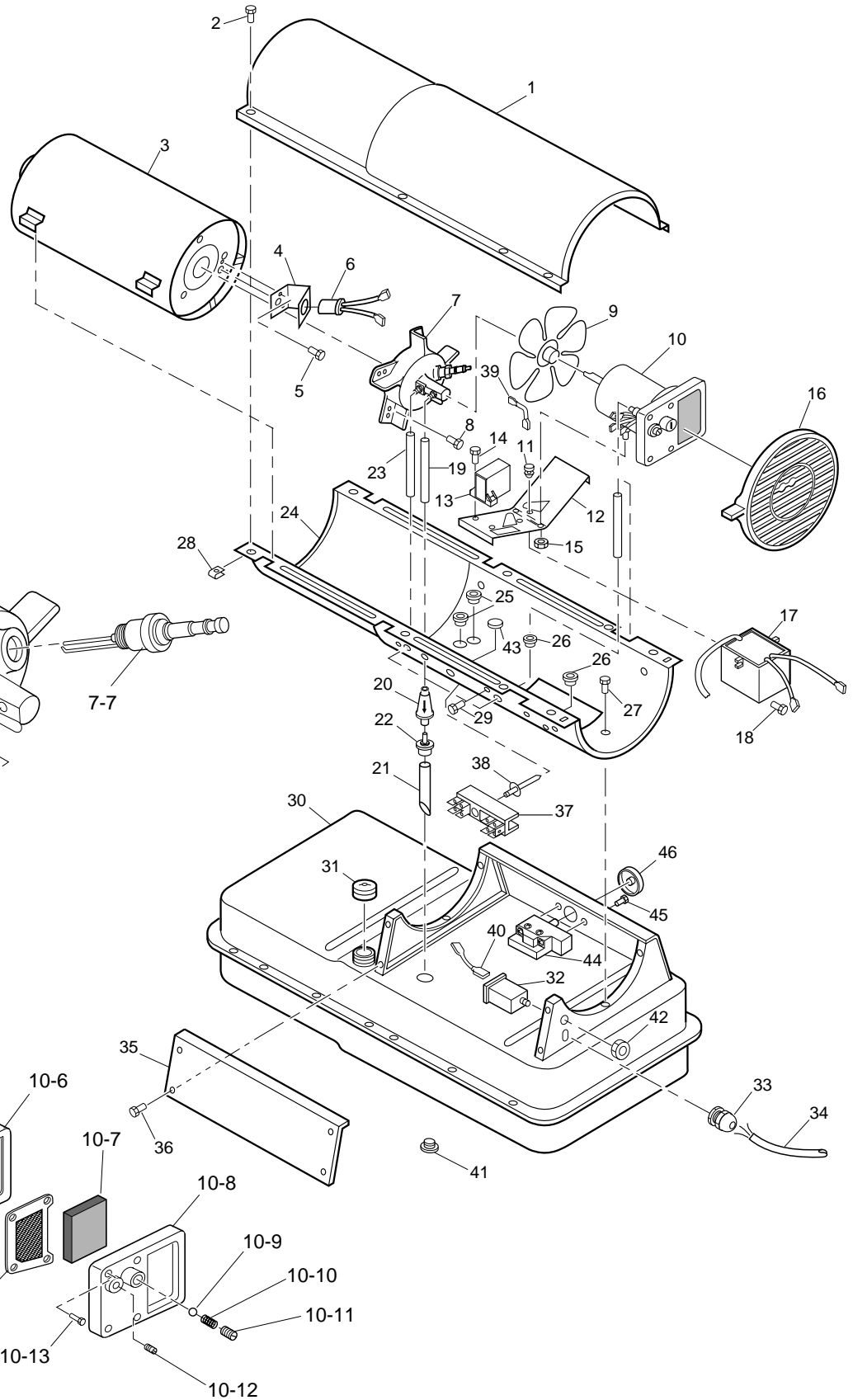
## ILLUSTRATED PARTS BREAKDOWN

**110,000 150,000 AND  
165,000 BTU/HR**

### Burner Head Assembly



### Motor and Pump Assembly



# OWNER'S MANUAL

## PARTS LIST

**110,000 150,000 AND  
165,000 BTU/HR**

This list contains replaceable parts used in your heater. When ordering parts, be sure to provide the correct model and serial numbers (from the model plate), then the part number and description of the desired part.

KEY NO.	PART NUMBER	DESCRIPTION	QTY.	KEY NO.	PART NUMBER	DESCRIPTION	QTY.
1	098511-138	Upper Shell (Yellow)	1	18	M11084-29	Screw, #10-16 x 3/4"	2
	098511-135	Upper Shell (White)	1	19	M51345-01	Fuel Line	1
2	100647-01	Screw, #10-16 x 1/2"	8	20	M51150-01**	Fuel Filter	1
3	098512-31	Combustion Chamber (110)	1	21	M51151-01	Fuel Line Tube (110 model)	1
	098512-37	Combustion Chamber (150)	1		M51151-02	Fuel Line Tube (150/165)	1
	098512-36	Combustion Chamber (165)	1	22	M10990-3	Rubber Bushing	1
4	M16660	Photocell Bracket (110)	1	23	M50814-03	Airline	1
	099229-01	Photocell Bracket (150/165)	1	24	098511-140	Lower Shell (Yellow)	1
5	M10908-2	Screw, #6-32 x 3/8"	2		098511-137	Lower Shell (White)	1
6	HA3019	Photocell Assembly	1	25	M50104-03	Bushing	2
7	***	Burner Head Assembly	1	26	M50104-01	Bushing	2
7-1	HA3009	Nozzle with Sleeve (110)	1	27	M11084-27	Screw, #10-16 x 1/2"	6
	HA3011	Nozzle with Sleeve (150)	1	28	M11271-8	Clip Nut	8
	HA3023	Nozzle with Sleeve (165)	1	29	M10908-14	Screw, #8-32 x 3/8"	1
7-2	M10659-1	Nozzle Washer	2	30	098513-87	Fuel Tank (110)	1
7-3	M10809-1	Nozzle Spring	1		098513-67	Fuel Tank (150/165)	1
7-4	M8882	Nozzle Sleeve	1	31	097702-01	Fuel Cap (Includes Gasket)	1
7-5	M50924-03	Burner Head Body (110)	1	32	HA3003	Flame-Out Control	1
	M50924-07	Burner Head Body (150/165)	1	33	M11143-1	Strain Relief Bushing	1
7-6	M50820-02	Barb Fitting	2	34	098219-24	Power Cord	1
7-7	HA3012	Spark Plug	1	35	M51077-01AA	Side Cover	1
8	M11084-27	Screw, #10-16 x 1/2"	3	36	M11084-27	Screw, #10-16 x 1/2"	4
9	097293-01	Fan (110/150)	1	37	099125-03	Terminal Board	1
	101897-01	Fan (165)	1	38	099157-01	Rivet	1
10	***	Motor and Pump Assembly	1	39	079010-20	Wire Assembly (Red, 18")	1
10-1	097300-02	Motor (110/150)	1	40	M16841-57	Wire Assembly (Red, 6")	1
	102001-07	Motor (165)	1	41	M27417	Drain Plug (Includes "o" Ring)	1
10-2	079975-02	Pump Body	1	42	099177-01	Hex Nut, 3/8 - 27	1
10-3	FHPF3-5C	Screw, #10-32 x 5/8"	2	43	099213-01	Button Plug	1
10-4	M22009**	Rotor Insert	1	44	097657-02	Thermostat	1
10-5	M22456-1**	Pump Rotor	1	45	M10908-1	Screw, #6-32 x 1/4"	2
10-6	M50545	Pump End Cover	1	46	104905-01	Thermostat Knob	1
10-7	M12179**	Intake Filter	1	<b>PARTS AVAILABLE - NOT SHOWN</b>			
10-8	M16545	Filter End Cover	1		103473-04	General Info. Decal (B110T)	1
10-9	M8940**	Steel Ball, 1/4" Diameter	1		098224-36	General Info. Decal (B150GT)	1
10-10	M10993-1**	Relief Spring	1		103473-01	General Info. Decal (B165T)	1
10-11	M27694**	Adjusting Screw	1		103473-03	General Info. Decal (R165T)	1
10-12	M22997**	Plug	1		M9900-192	Combustion Chamber	1
10-13	M12461-31	Screw, #10-32 x 1"	10			Grounding Wire	1
10-14	M12244-1**	Output Filter	1		099650-01	Wire Clip (Secures thermostat and power cord wires)	1
10-15	M11637**	Lint Filter	1	<b>OPTIONAL ACCESSORIES</b>			
10-16	M50820-02	Barb Fitting	1		HA3004	Rotor Kit (M22456-1, M22009, M8643)	
10-17	M8643**	Blade	4		HA3017	Filter Kit (M11637, M12179, M12244-1, M51150-01)	
11	M50631	Rubber Bumper	2		HA3020	Pump Kit (M27694, M10993-1, M22997, M8940)	
12	101206-01	Motor Mounting Bracket	1				
13	097061-01	Solid State Relay	1				
14	M15823-39	Screw, #8-18 x 1/2"	2				
15	NTC-4C	Hex Lock Nut, 1/4-20	2				
16	M51114-01	Fan Guard	1				
17	102482-01	Ignitor Kit	1				

\*\* See OPTIONAL ACCESSORIES

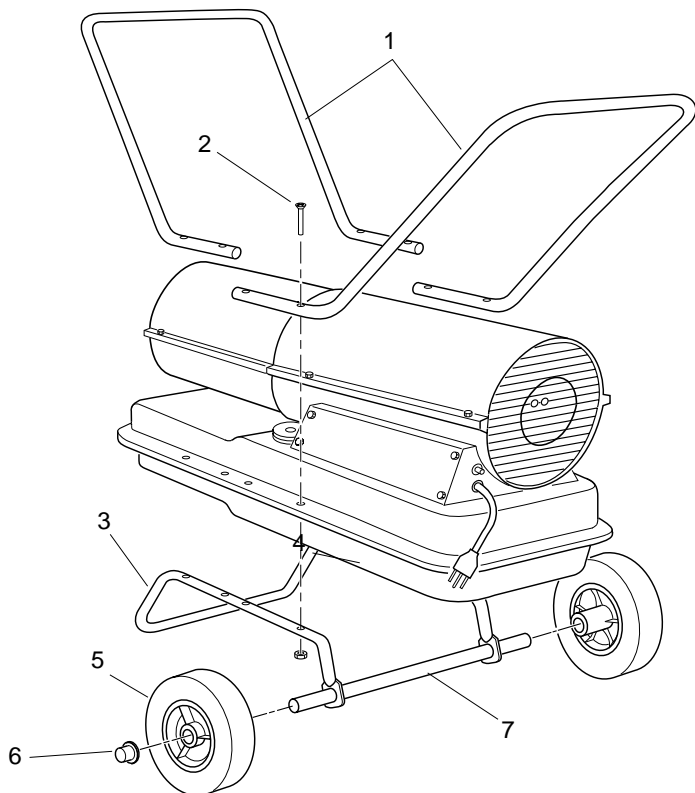
\*\*\* Not available as an assembly.

# 70,000 110,000 150,000 AND 165,000 BTU/HR PORTABLE FORCED AIR HEATER

## PARTS LIST

### WHEELS AND HANDLE PARTS LIST

KEY NO.	PART NUMBER	PART DESCRIPTION	110 MODEL QTY.	150/165 MODELS QTY.
1	HA2203	Handle	2 (if equipped)	—
	HA2204	Handles	—	2 (if equipped)
2	M12345-33	Screw, #10-24 x 1 3/4"	8	8
3	M12342-3	Wheel Support Frame	1	—
	M12831-3	Wheel Support Frame	—	1
4	NTC-3C	Hex Nut, #10-24	8	8
5	097896-04	Wheel (Black Hub)	2	2
	097896-01	Wheel (White Hub)	2	2
6	M28526	Cap Nut	2	2
7	M51015-01	Axle	1	—
	M16801-2	Axle	—	1



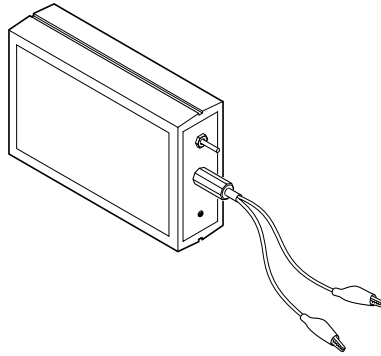


# OWNER'S MANUAL

## ACCESSORIES

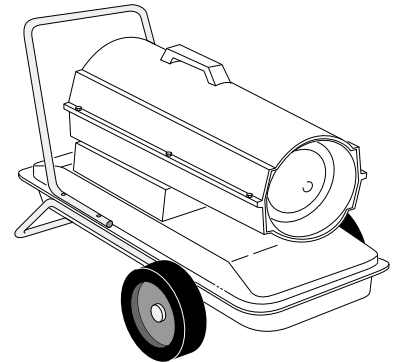
Purchase accessories and parts from your nearest dealer or service center. If they can not supply these accessories or parts, either contact your nearest Parts Central or DESA International for referral information. Parts Centrals are listed in the Authorized Service Center booklet supplied with heater.

**DESA International**  
**P.O. Box 90004**  
**Bowling Green, KY**  
**42102-9004**  
**1-800-972-7879**  
**Parts Department**



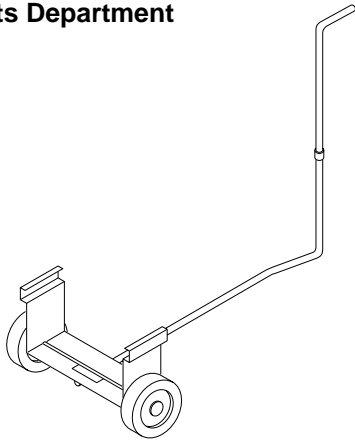
### **FLAME-OUT CONTROL/ PHOTOCELL TESTER - HA1170**

Special tool used to test the flame-out control and photocell.



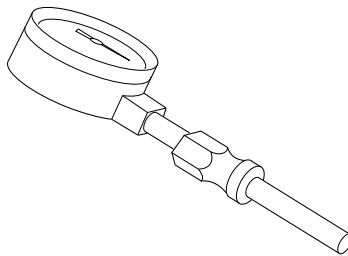
### **HEAVY DUTY WHEELS AND HANDLE KIT - HA1202**

For heavy duty applications. Makes your heater even more portable and convenient. For 70,000 BTU/Hr model only.



### **STANDARD WHEELS AND HANDLE KIT - HA1206**

Makes heater even more portable and convenient. Easy to assemble. For 70,000 BTU/Hr model only.



### **AIR GAUGE KIT - HA1180**

Special tool to check pump pressure. For all models.

# WARRANTY AND REPAIR SERVICE

## LIMITED WARRANTY

DESA International warrants this product and any parts thereof, to be free from defects in materials and workmanship for one (1) year from the date of first purchase when operated and maintained in accordance with instructions. This warranty is extended only to the original retail purchaser, when proof of purchase is provided.

This warranty covers only the cost of parts and labor required to restore the product to proper operating condition. Transportation and incidental costs associated with warranty repairs are not reimbursable under this warranty.

Warranty service is available only through authorized dealers and service centers.

This warranty does not cover defects resulting from misuse, abuse, negligence, accidents, lack of proper maintenance, normal wear, alteration, modification, tampering, contaminated fuels, repair using improper parts, or repair by anyone other than an authorized dealer or service center. Routine maintenance is the responsibility of the owner.

**THIS EXPRESS WARRANTY IS GIVEN IN LIEU OF ANY OTHER WARRANTY EITHER EXPRESSED OR IMPLIED, INCLUDING WARRANTIES OF MERCHANTABILITY AND FITNESS FOR A PARTICULAR PURPOSE.**

DESA International assumes no responsibility for indirect, incidental or consequential damages. Some states do not allow the exclusion or limitation of incidental or consequential damages or limitations or exclusions may not apply to you. This Limited Warranty gives you specific legal rights and you may also have other rights which vary from state to state.

## WARRANTY SERVICE

Should your heater require service, return it to your nearest authorized service center. Proof of purchase must be presented with the heater. The heater will be inspected. A defect may be caused by faulty materials or workmanship. If so, DESA International will repair or replace the heater without charge.

## REPAIR SERVICE

Return the heater to your nearest authorized service center. Repairs not covered by the warranty will be billed at standard prices. Each Service Center is independently owned and operated. We reserve the right to amend these specifications at any time without notice. A service manual may be purchased from the address listed below. Send a check for \$5.00 payable to DESA International.

When writing for information regarding your heater, be sure to include the model number and serial number as shown on the model plate.

### KEEP THIS WARRANTY

Model No. _____
Serial No. _____
Date of Purchase _____

(To be filled in by purchaser)

# DESA

## INTERNATIONAL

**Corporate Headquarters**

2701 Industrial Drive

P.O. Box 90004

Bowling Green, KY 42102-9004



103301 01

NOT A UPC

For information, write: DESA International, P.O. Box 90004  
Bowling Green, Kentucky 42102-9004 ATTN: Customer Service Department

103301-01  
Rev. C  
07/98